

Designed to surprise



SIDDHA  
**suburbia**  
- bungalows -  
A RIYA SIDDHA PROJECT

**SIDDHA**  
**suburbia**  
**\_ bungalows \_**  
 A RIYA SIDDHA PROJECT

An unrivalled combination of space, scale, foliage and altitude promises you a life that most only dream of. Greet your world of Row Bungalows. G+1 floor with terrace housing a host of modern facilities is just minutes away from all conveniences.

It gives you the best of two worlds with 2 access gates- one on NSC Bose Road and another on Southern Bypass. Crowning the experience will be access to a 472 metre Rooftop Skywalk and a premium club on the ground level with a host of features and amenities.

Grandness waits to welcome you.



A heavenly experience for you to own at Siddha Suburbia Bungalows. Housing a one-of-a kind residential opportunity in the south of Kolkata, it is connected to life at its optimum. Get ready to live large at a price that easily fits your budget.

Be privy to more than you expect.

Let your view envelope the horizon. Soak in the misty freshness, all 153 feet above the ground level on the Rooftop Skywalk. Bond with the like-minded at the well-equipped club. Revel in a life beyond imaginations.

**Reach easy**

Siddha Suburbia is connected by NSC Bose Road and Southern Bypass (EM Bypass extension). Just 4.5 km off Baruipur on the eastern bank of Adi Ganga and 6.3 km from Ramkrishna Mission, the project enjoys a good location.

From site to:	In kms
Baruipur Market	5.6
Baruipur Station	3.3
Rajpur Bazaar	4.2
Narendrapur RK Mission	6.3
Wood Square Mal	6.6
Apollo Clinic	7.1
Kamalgazi Flyover	7.8
Shahid Khudiram Metro	10.9
Big Bazaar	7.7
Garia More	10.8
Peerless Hospital	13
Metro Cash & Carry	15
Ruby Hospital	17

Distance estimate:





It's your dream come true. Choose from our range of private bungalows that allow you the space you need. Designed with care these houses come with a parking area, spacious interiors and balconies. Take your pick.

### Bungalow types

	Carpet area (sq ft)	Balcony Area (sq ft)	Built up area (sq ft)
A1	1170	43	1518
A2	1221	49	1593
A5-A19	1138	42	1472
B1	1079	21	1424
L4-L5	1512	43	1877



Type A1 | A5 - A19



Type A2



Type B1



Type L4 - L5



Living room



Master bedroom

## Facilities

- Intercom
- Cable TV
- Broadband point
- Sewage treatment plant
- Power backup for common areas
- 24/7 water supply
- Security with 24/7 surveillance at entry gates

## Conveniences

- Pet-friendly zone
- Sidewalk and seating zone
- Ambulance on call

## Provisions for

- ATM
- Milk booth

## Specifications

### Master Bedroom

Vitrified tiles

### Other Bedroom & Living Room

Vitrified tiles

### Bathroom

Ceramic tiles

### Balcony

Vitrified tiles

### Stair

Vitrified tiles

### Roof

Heat reflecting tiles

### Kitchen

Floor - Anti skid ceramic tiles.

Dado - Ceramic tiles up to 2 ft

Platform - Granite stone

### Sanitaryware

Chromium plated fittings with high quality porcelain fixtures

### Electrical Fittings

Superior quality concealed copper (fire resistance low smoke) wiring modular switches and miniature circuit breakers

### Interior

Putty finish

### Exterior

Weatherproof exterior finish

### Railings

Ms railing with anti-corrosion paint



## Tower above the city at South Kolkata's first Rooftop Skywalk

### Skywalk Features

Jogging track | Fitness stations | Yoga & meditation zone | Play courts | Rock climbing | Ludo court  
Adda zone | Sit-outs | Outdoor seating | Party lawn and deck | Skating zone | Barbeque corners | Skyplex  
Kids' play area | Organic herbs garden | Water feature with sprinklers and fountains  
Observatory deck | Amphitheatre | Senior citizens' area | Pantry | Service counter and more ...



Aerial view of Rooftop Skywalk



Amphitheatre and Skyplex on the Rooftop Skywalk



Water feature on the Rooftop Skywalk

### Residential Club

Swimming pool | Gymnasium | Children's play room | Indoor games room | AC banquet hall | Coffee shop  
Library-cum-lounge | Hobby room | Multi-purpose hall | Mini-theatre/Music room | Badminton court  
Squash court and more ...



AC banquet hall



Gymnasium



Children's play room



Indoor games room



## Our apartments



Siddha Suburbia Apartments Kolkata  
South Kolkata's first Rooftop Skywalk  
2 & 3 BHK apartments with 2 access gates  
HIRA/P/SOU/2018/000119 | [hira.wb.gov.in](http://hira.wb.gov.in)

## Our recently completed bungalow project



Siddha Aangan Jaipur  
Ready-to-move-in villas on Jaipur-Ajmer Expressway before Toll

## Some of our ongoing projects



Siddha Galaxia Rajarhat Kolkata  
World's longest Rooftop Skywalk  
HIRA/P/NOR/2018/000184 | [hira.wb.gov.in](http://hira.wb.gov.in)



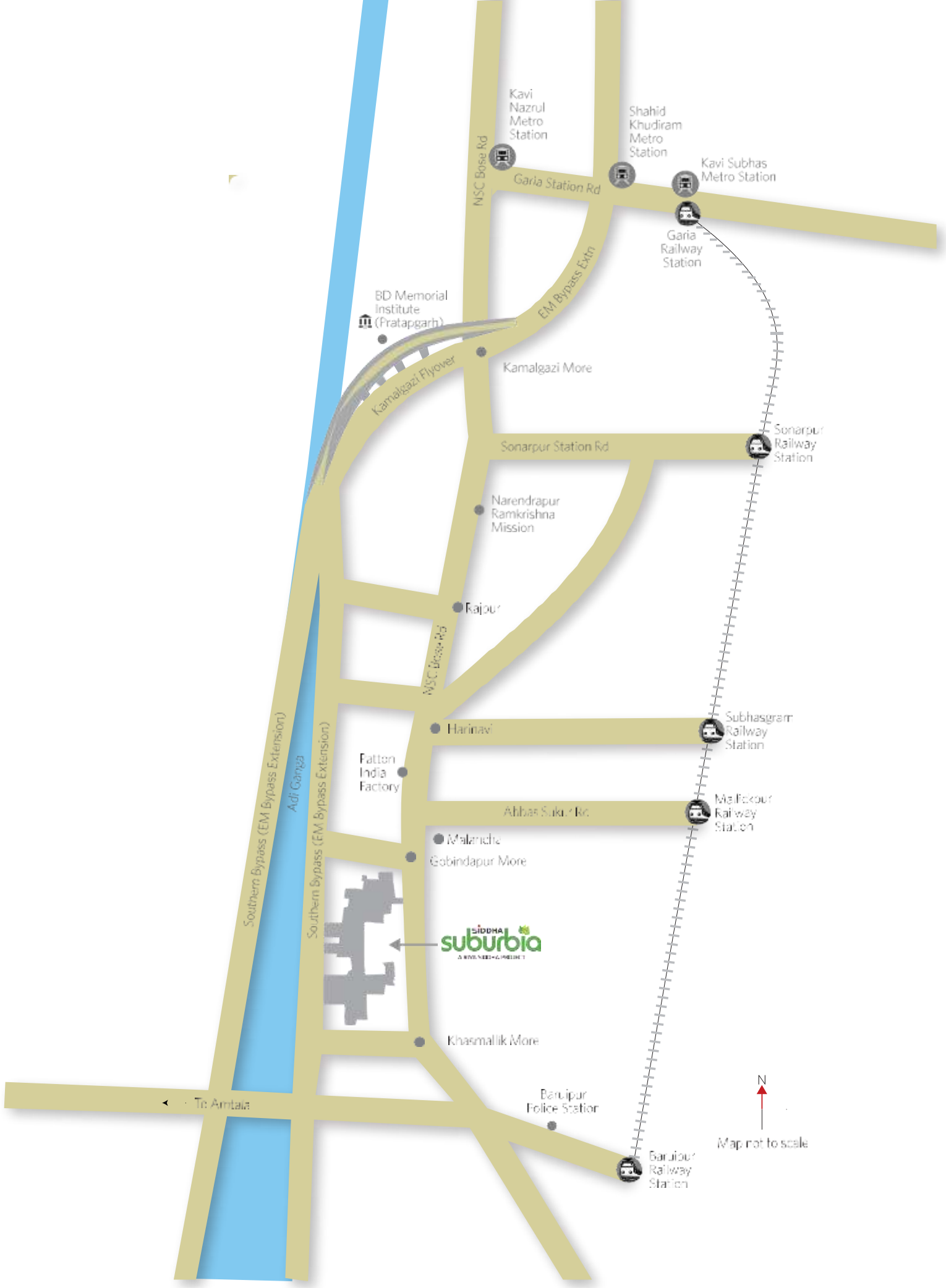
Siddha Sky Wadala Mumbai  
Mumbai's first Rooftop Skywalk  
MahaRERA Registration No Phase 1 - P51900021027 | Phase 2 - P51900021040  
Phase 3 - P51900021044 | Phase 4 - P51900021031 | [maharera.mahaonline.gov.in](http://maharera.mahaonline.gov.in)



Siddha Sky - EM Bypass Kolkata  
Kolkata's tallest Rooftop Skywalk  
HIRA/P/KOL/2018/000118 | [hira.wb.gov.in](http://hira.wb.gov.in)



Siddha Eden LakeVille BT Road Kolkata  
North Kolkata's first Rooftop Skywalk  
Phase 1 - HIRA/P/NOR/2018/000183 | [hira.wb.gov.in](http://hira.wb.gov.in)  
Phase 2 - HIRA/P/NOR/2019/000385 | [hira.wb.gov.in](http://hira.wb.gov.in)



**SIDHA**  
**suburbia**  
A RAIL-NEED-GRADE PROJECT

N  
Map not to scale

← To Amtala



Project Site Plan

**SIDDHA**  
**suburbia**  
- apartments | bungalows -  
A RIVA SIDDHA PROJECT







# Site Plan



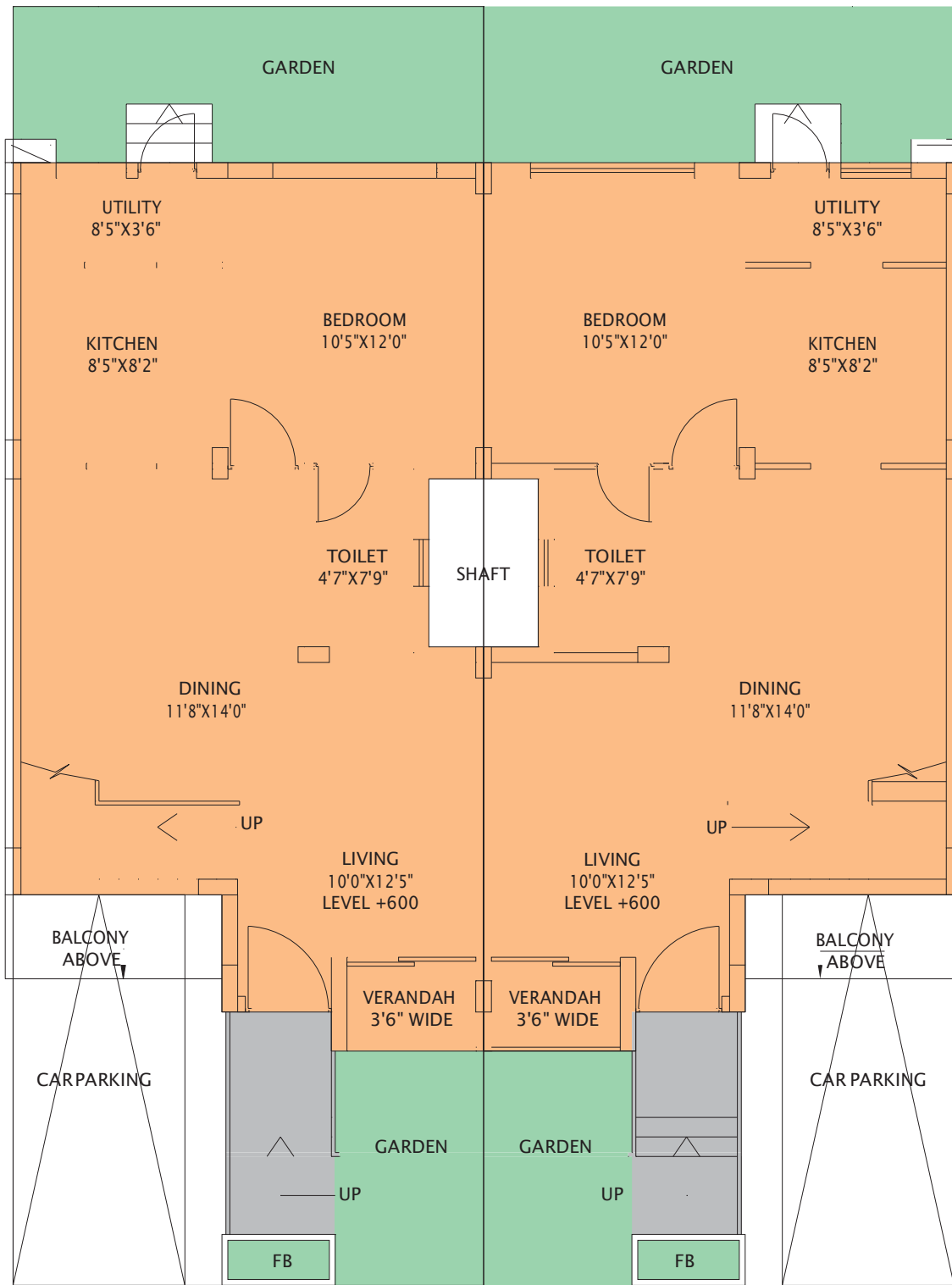
Bungalow Type	
<span style="display:inline-block; width:15px; height:15px; background-color: #FF69B4; border: 1px solid black;"></span>	A1
<span style="display:inline-block; width:15px; height:15px; background-color: #ADD8E6; border: 1px solid black;"></span>	A2
<span style="display:inline-block; width:15px; height:15px; background-color: #4169E1; border: 1px solid black;"></span>	A5~A19
<span style="display:inline-block; width:15px; height:15px; background-color: #8A56A0; border: 1px solid black;"></span>	B1
<span style="display:inline-block; width:15px; height:15px; background-color: #FF8C00; border: 1px solid black;"></span>	L4 & L5

Block	Total No of Bungalows
1	6
2	8
3	7
4	2
5	8
6	8
7	2



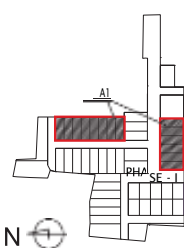


# Type A1



Ground Floor Plan

Floor	Carpet Area (sqft)	Balcony Area (sqft)	Built-up Area (sqft)
Ground	580	17	1518
First	590	26	
<b>Total</b>	<b>1170</b>	<b>43</b>	<b>1518</b>



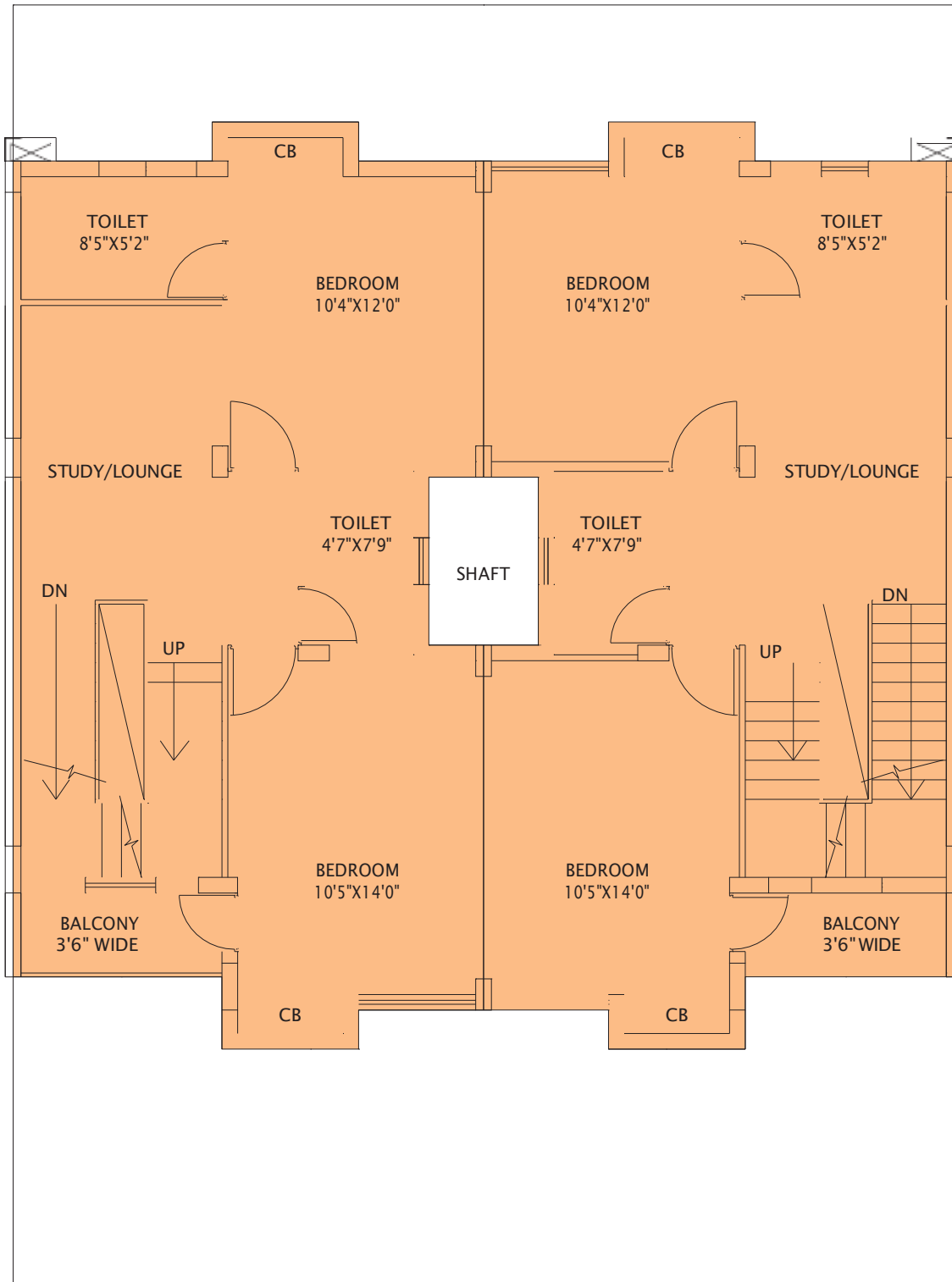
Type A1



Ground Floor Plan

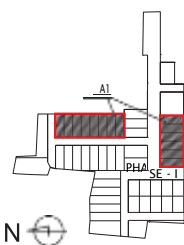


# Type A1



**First Floor Plan**

Floor	Carpet Area (sqft)	Balcony Area (sqft)	Built-up Area (sqft)
Ground	580	17	1518
First	590	26	
<b>Total</b>	<b>1170</b>	<b>43</b>	<b>1518</b>



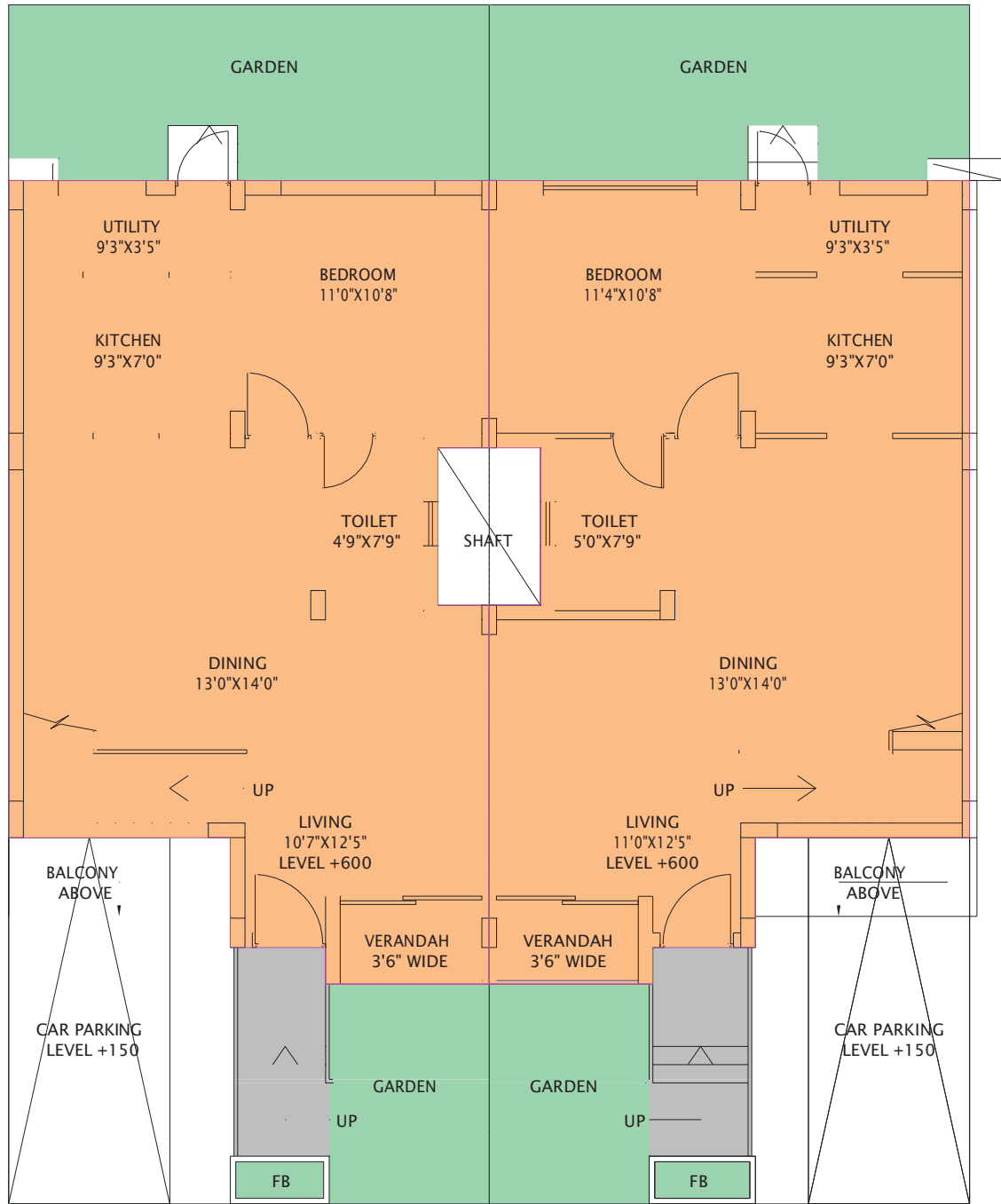
Type A1



First Floor Plan

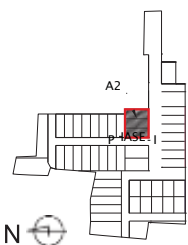


# Type A2



Ground Floor Plan

Floor	Carpet Area (sqft)	Balcony Area (sqft)	Built-up Area (sqft)
Ground	607	20	1593
First	614	29	
<b>Total</b>	<b>1221</b>	<b>49</b>	<b>1593</b>



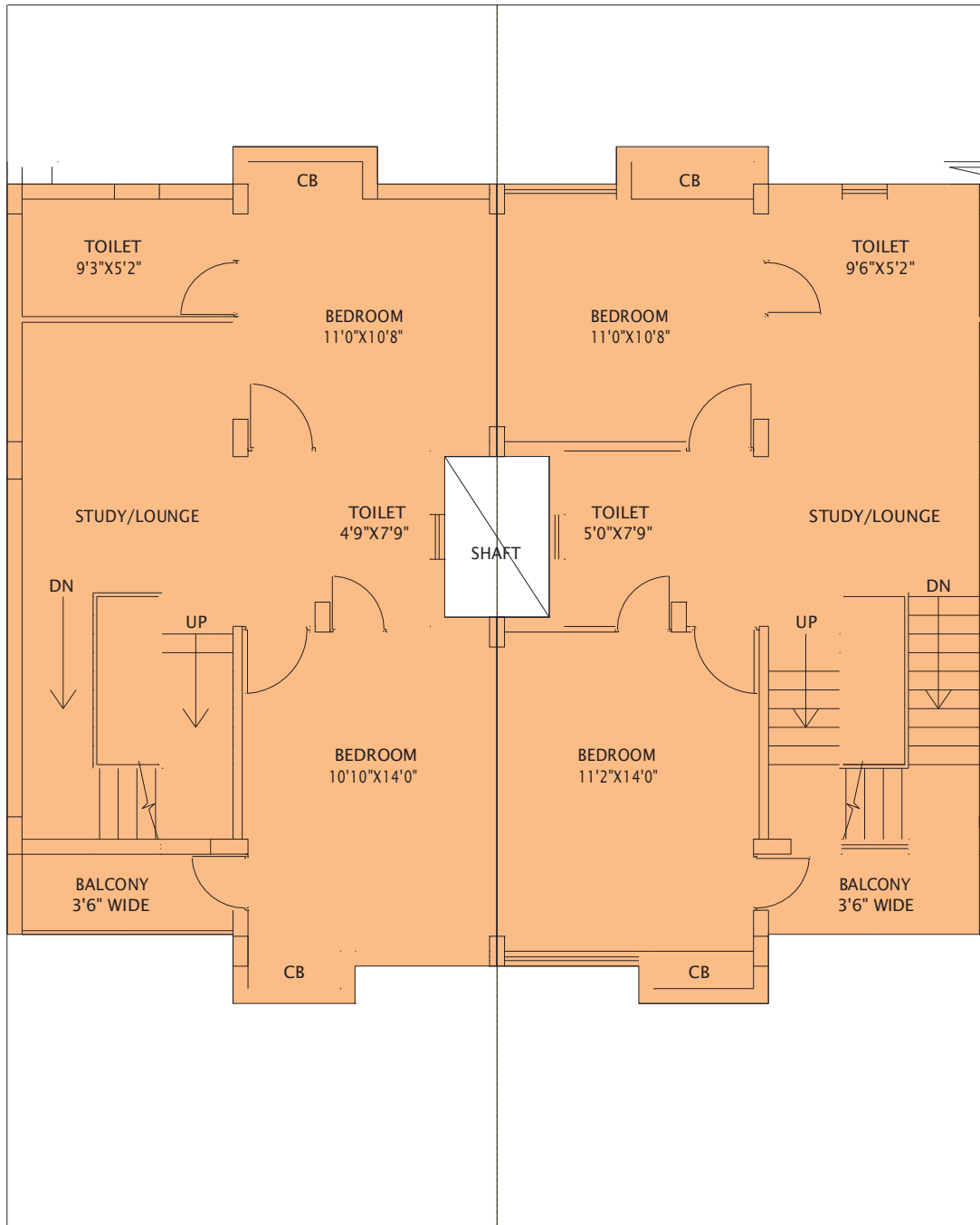
Type A2



Ground Floor Plan

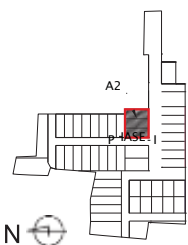


# Type A2



**First Floor Plan**

Floor	Carpet Area (sqft)	Balcony Area (sqft)	Built-up Area (sqft)
Ground	607	20	1593
First	614	29	
<b>Total</b>	<b>1221</b>	<b>49</b>	<b>1593</b>

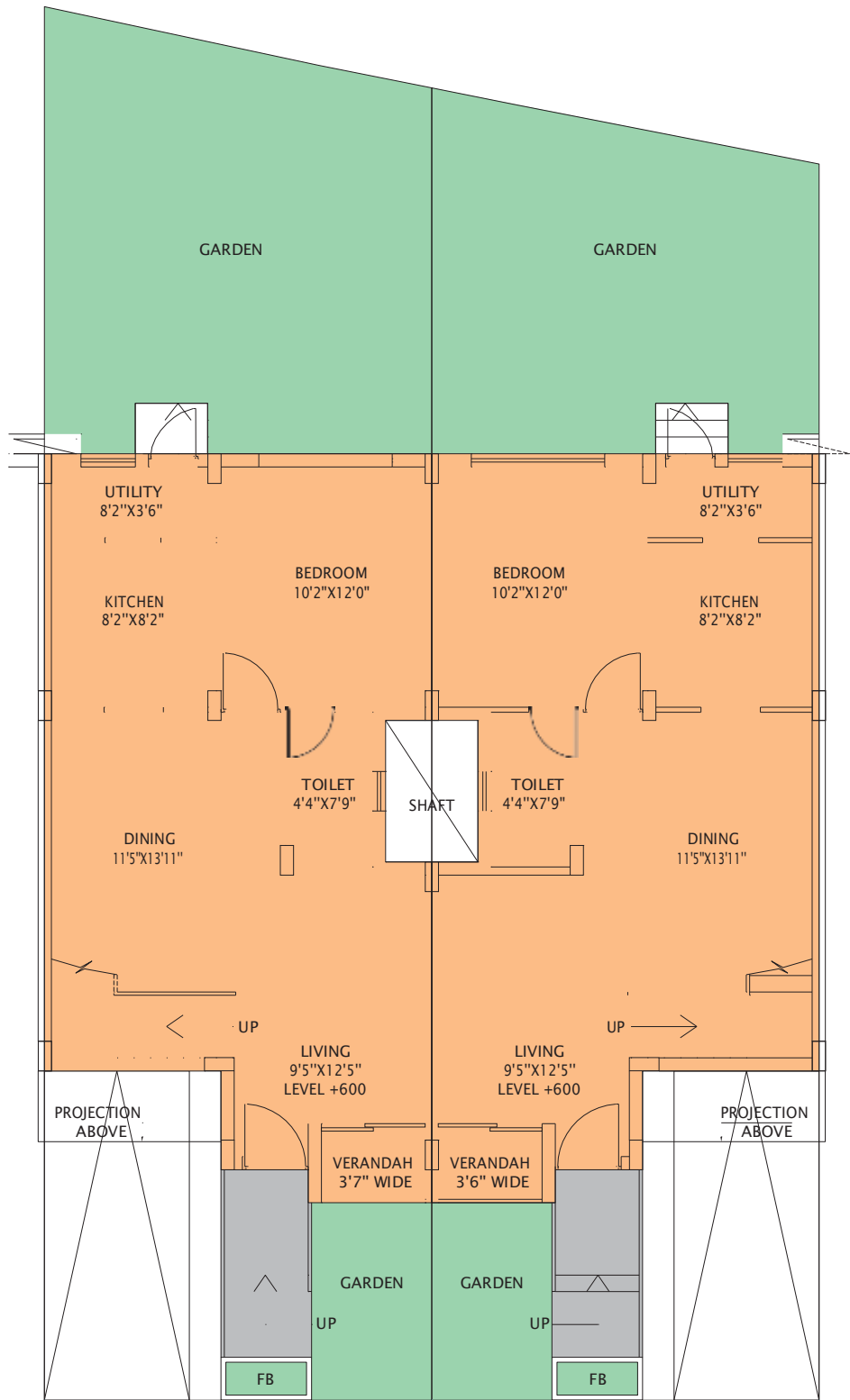


Type A2



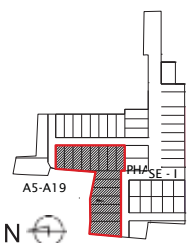
First Floor Plan

# Type A5-A19



## Ground Floor Plan

Floor	Carpet Area (sqft)	Balcony Area (sqft)	Built-up Area (sqft)
Ground	563	16	1472
First	575	26	
<b>Total</b>	<b>1138</b>	<b>42</b>	<b>1472</b>



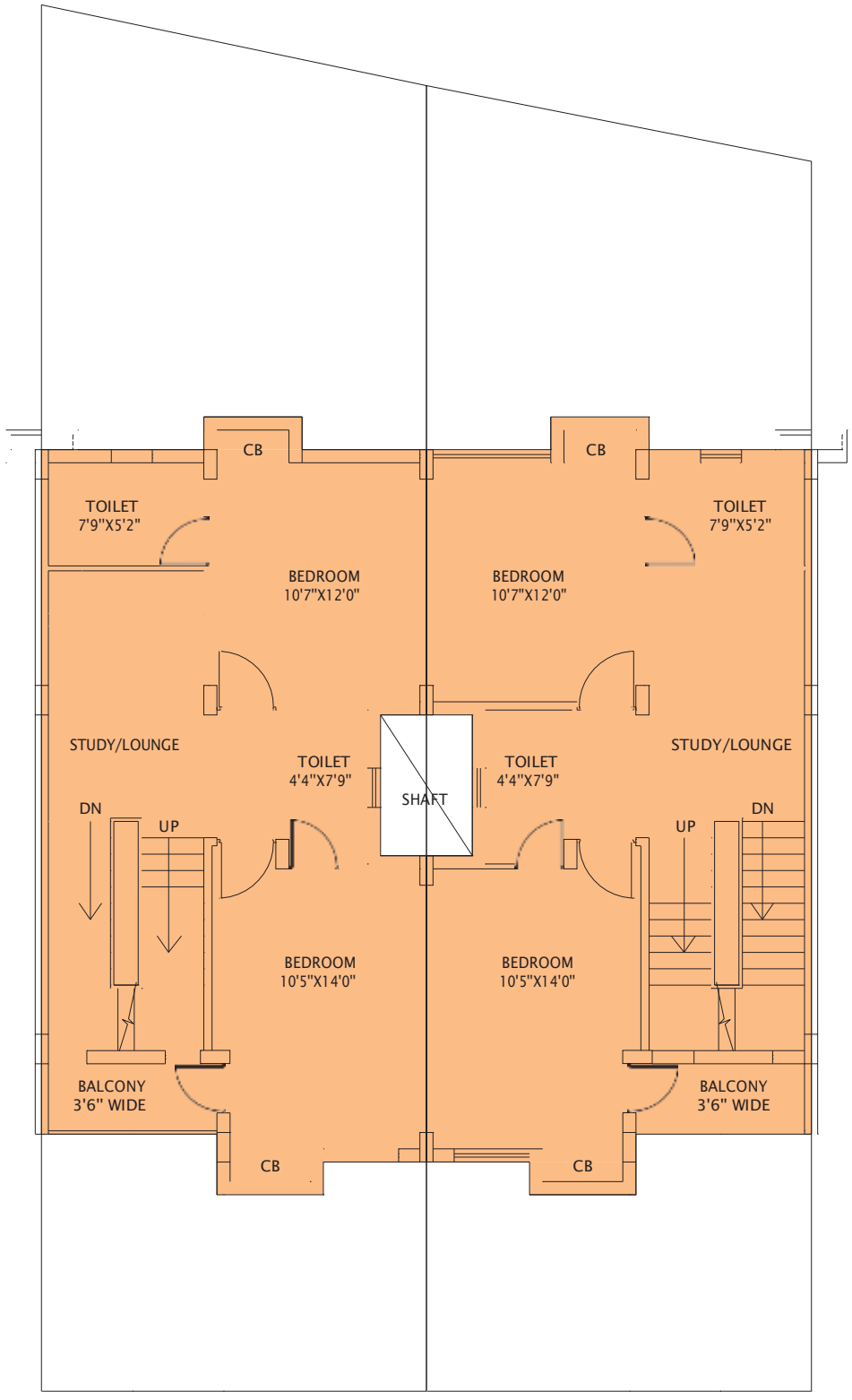


Type A5-A19



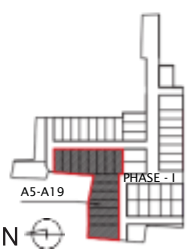
Ground Floor Plan

# Type A5-A19



**First Floor Plan**

Floor	Carpet Area (sqft)	Balcony Area (sqft)	Built-up Area (sqft)
Ground	563	16	1472
First	575	26	
<b>Total</b>	<b>1138</b>	<b>42</b>	<b>1472</b>



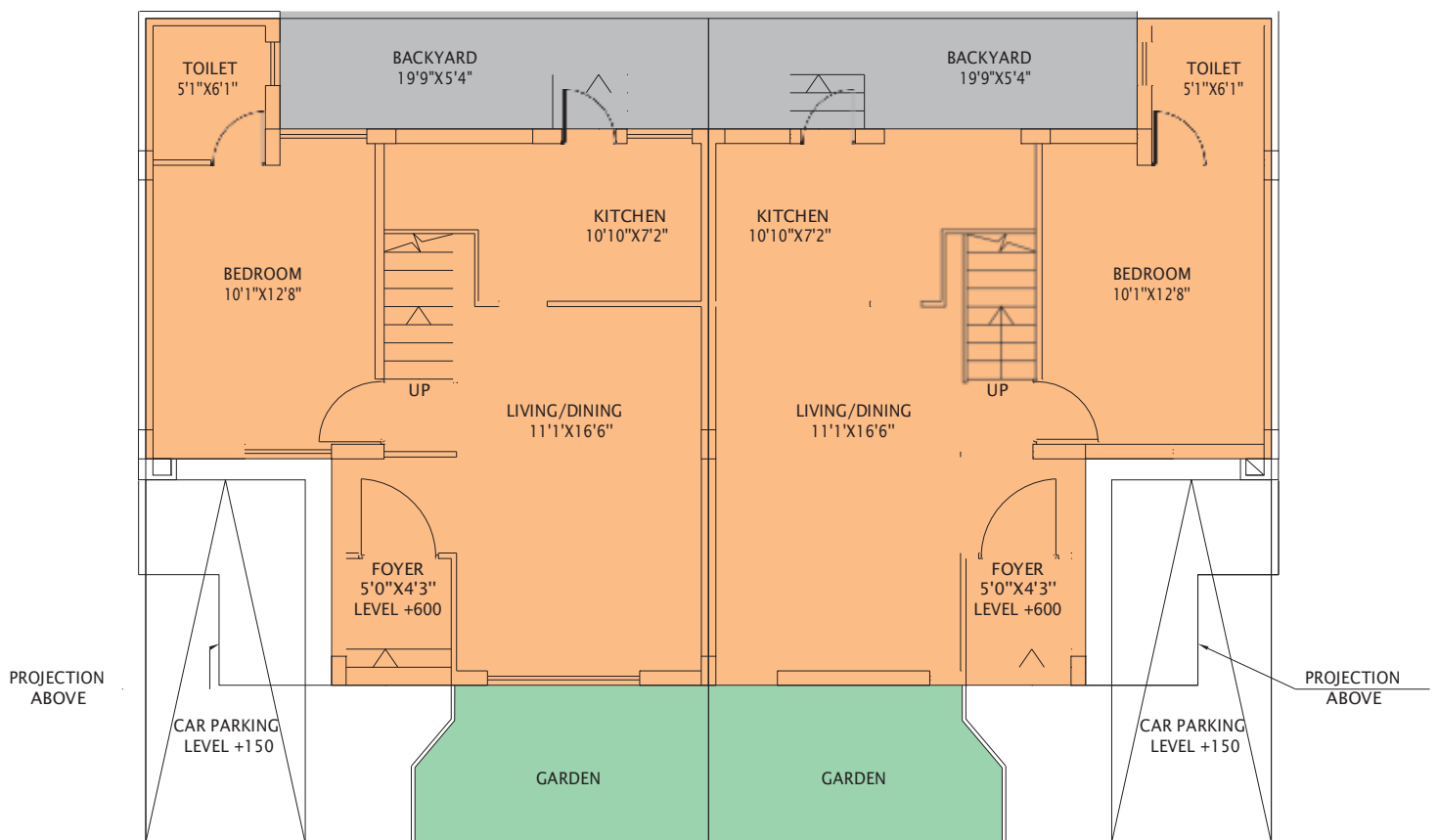
Type A5-A19



First Floor Plan

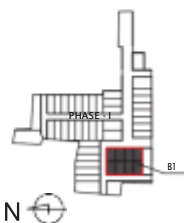


# Type B1



## Ground Floor Plan

Floor	Carpet Area (sqft)	Balcony Area (sqft)	Built-up Area (sqft)
Ground	501	-	1424
First	578	21	
<b>Total</b>	<b>1079</b>	<b>21</b>	<b>1424</b>

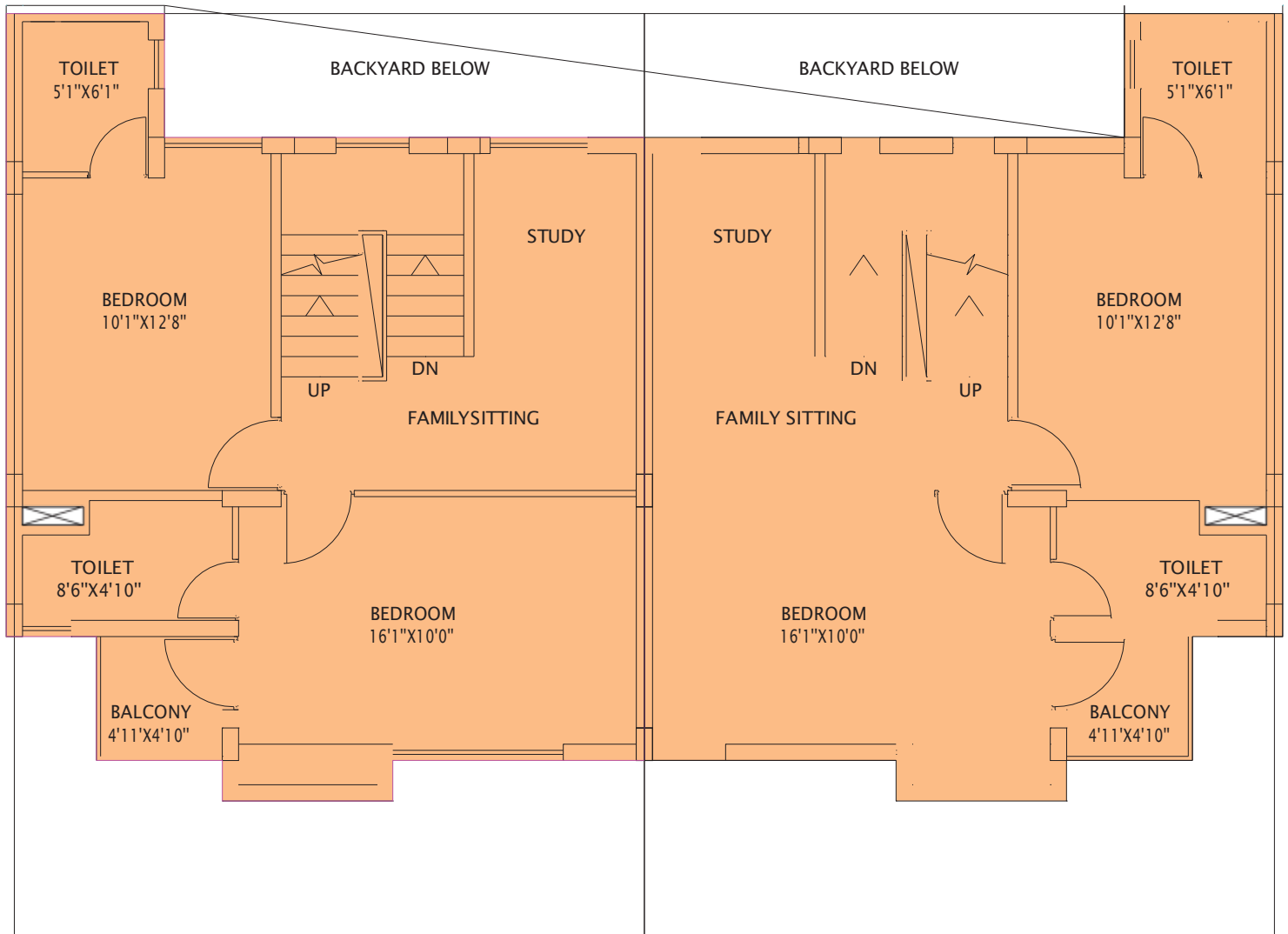


Type B1



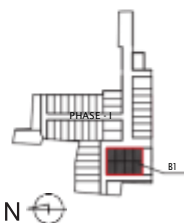
Ground Floor Plan

# Type B1



## First Floor Plan

Floor	Carpet Area (sqft)	Balcony Area (sqft)	Built-up Area (sqft)
Ground	501	-	1424
First	578	21	
<b>Total</b>	<b>1079</b>	<b>21</b>	<b>1424</b>



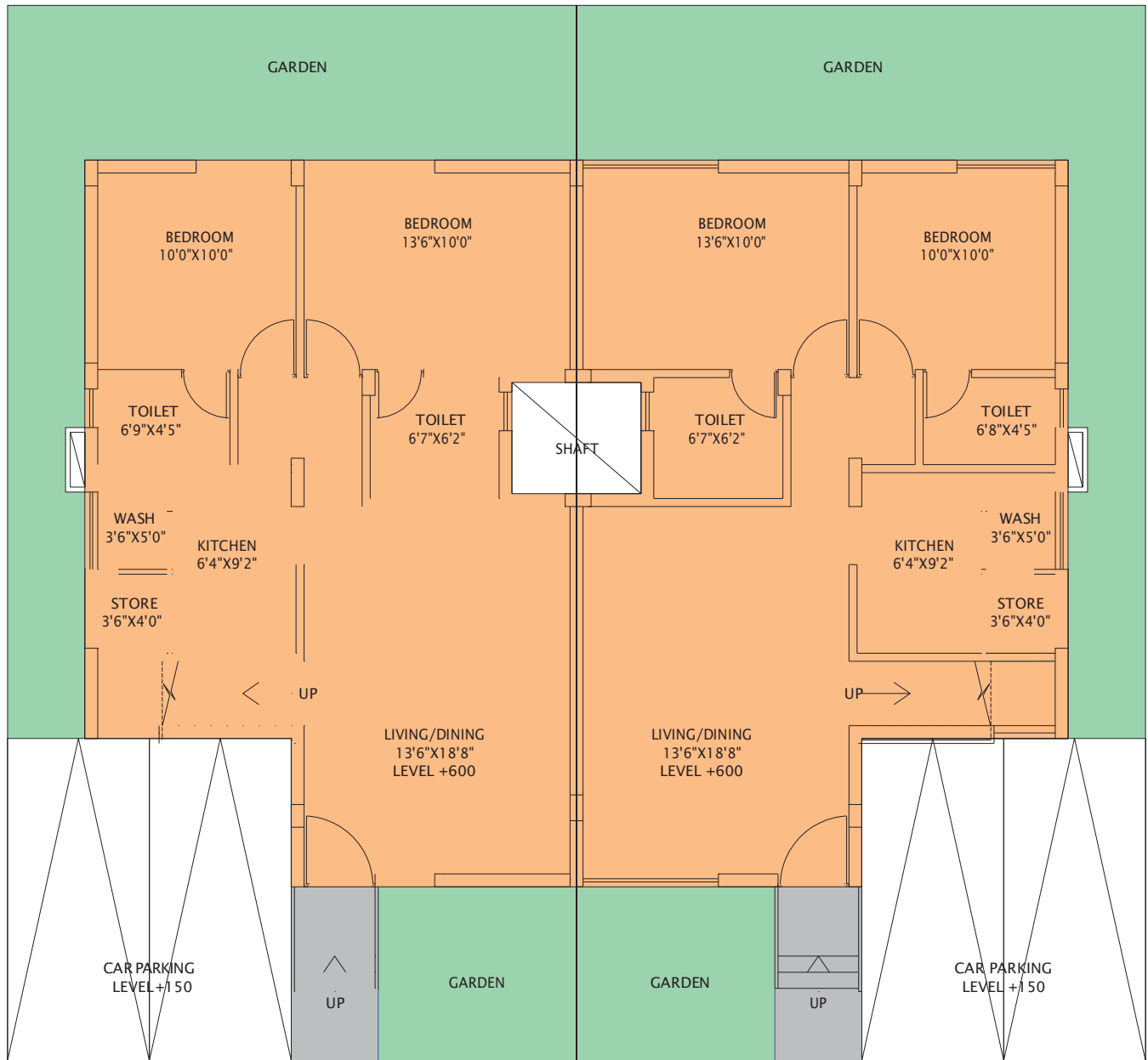


Type B1



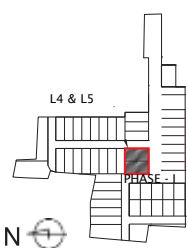
First Floor Plan

# Type L4 & L5



**Ground Floor Plan**

Floor	Carpet Area (sqft)	Balcony Area (sqft)	Built-up Area (sqft)
Ground	753	-	1877
First	759	43	
<b>Total</b>	<b>1512</b>	<b>43</b>	<b>1877</b>



Type L4 & L5

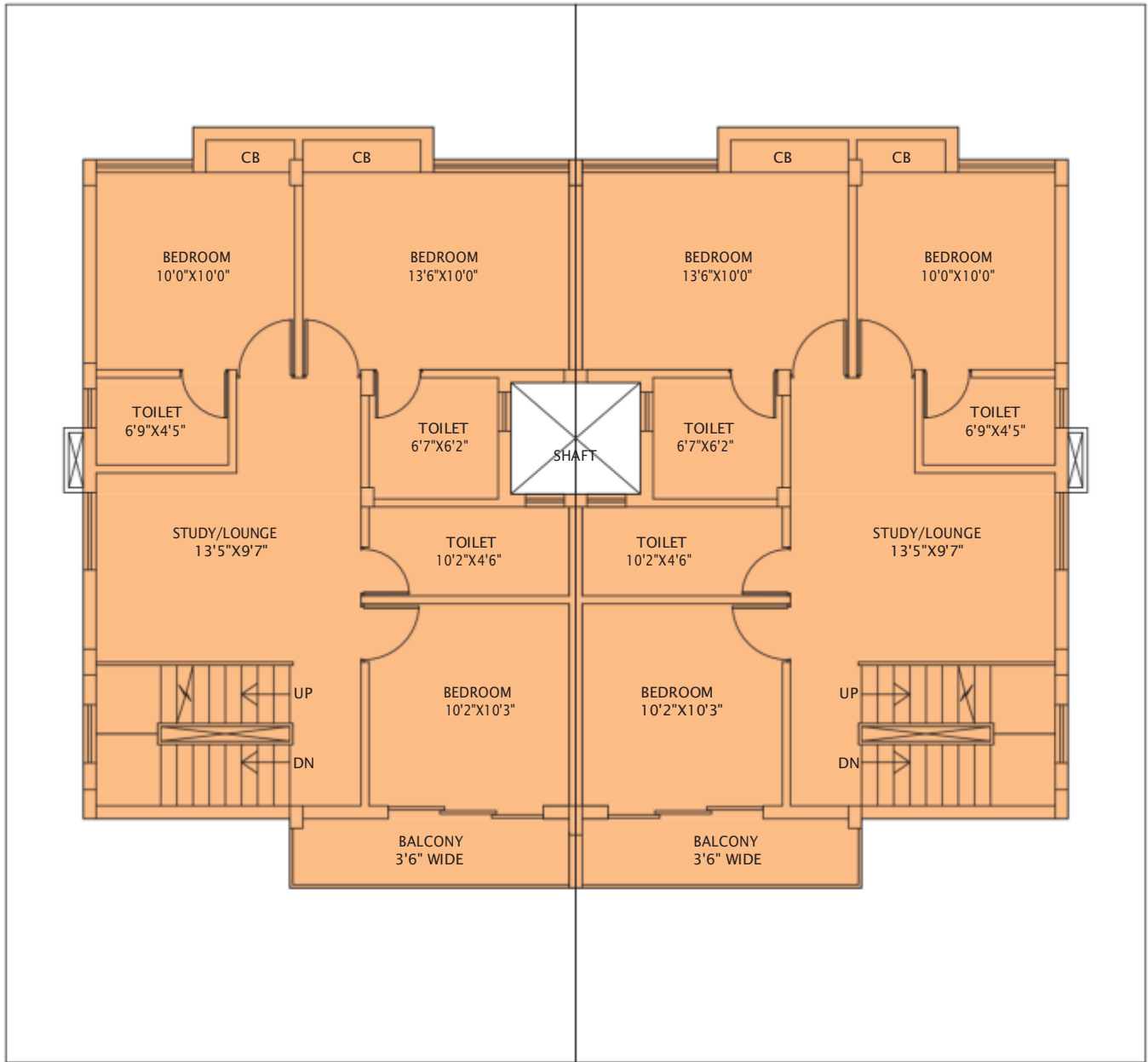


L4 | Ground Floor Plan



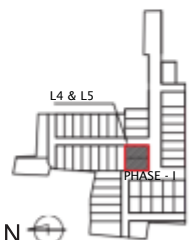
L5 | Ground Floor Plan

# Type L4 & L5



First Floor Plan

Floor	Carpet Area (sqft)	Balcony Area (sqft)	Built-up Area (sqft)
Ground	753	-	1877
First	759	43	
<b>Total</b>	<b>1512</b>	<b>43</b>	<b>1877</b>





Type L4 & L5

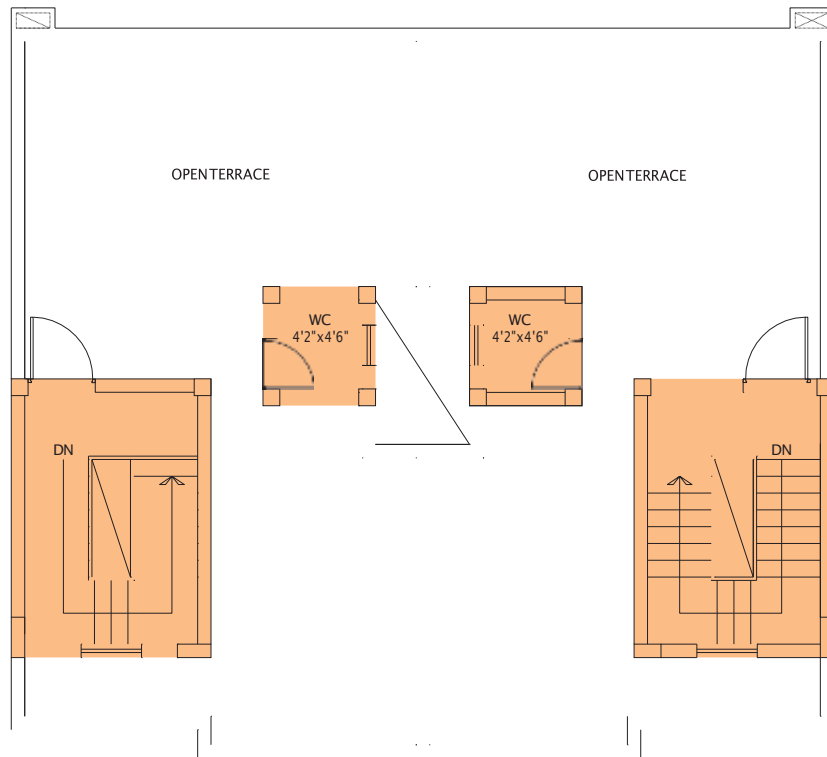


L4 | First Floor Plan



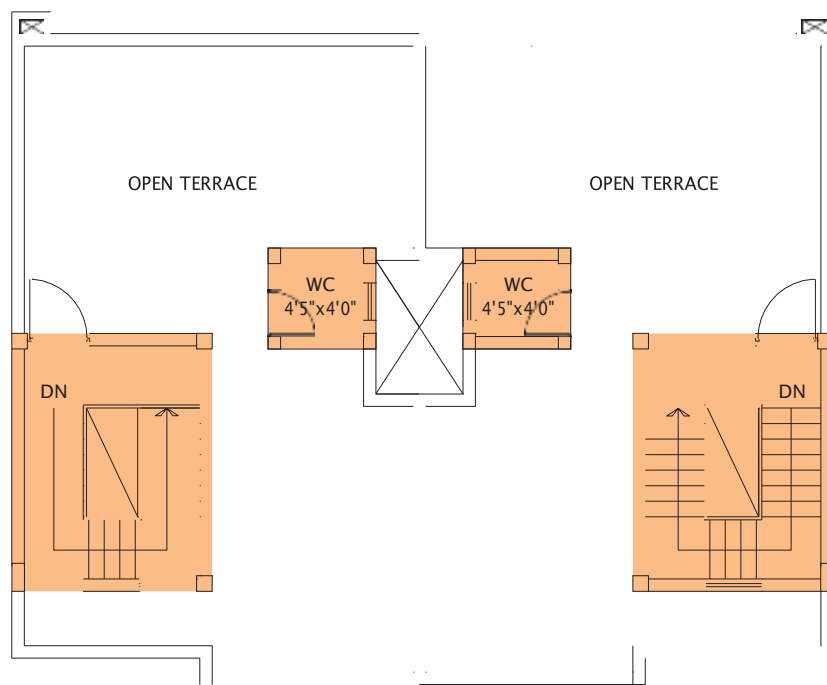
L5 | First Floor Plan

# Roof Plan



## Type A1

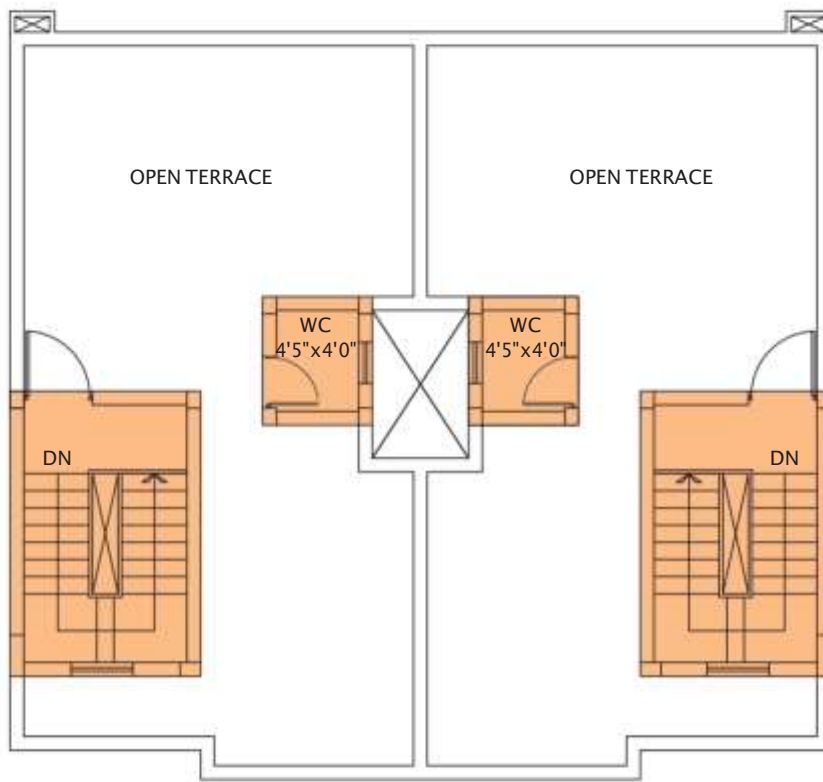
Roof Built-up Area 165 sq ft



## Type A2

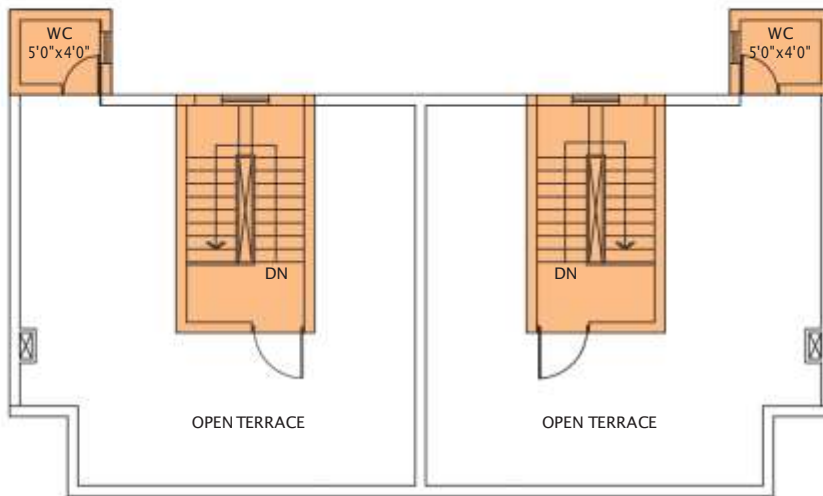
Roof Built-up Area 175 sq ft

# Roof Plan



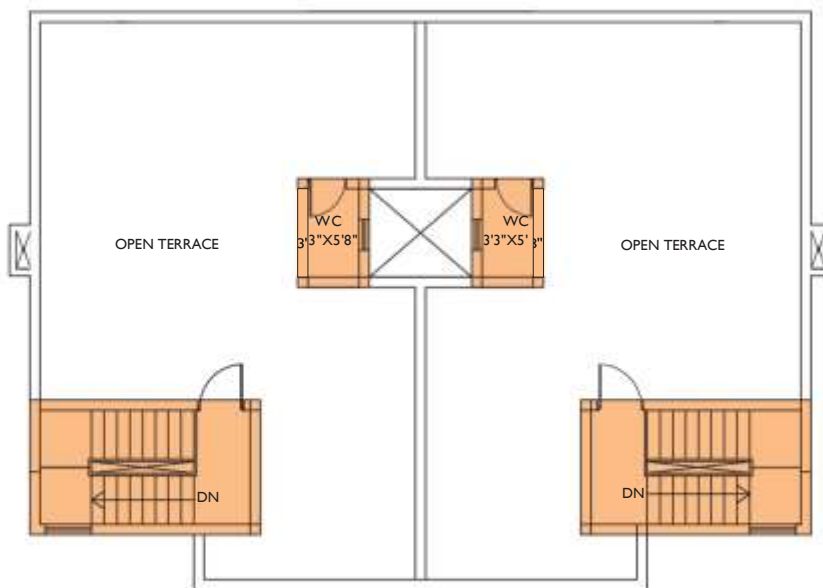
## Type A5-A19

Roof Built-up Area 156 sq ft



## Type B1

Roof Built-up Area 164 sq ft



## Type L4 & L5

Roof Built-up Area 159 sq ft